



AML21GBA2AC

Image Not Available

AML21 Series, Electronic Control Pushbutton, Rectangular, Standard Bezel, Lighted, 2 Incandescent Lamp, DPDT, Momentary Action, Snap in panel mount

Features

- 1, 2, or 4 poles.
- Silver or gold contacts.
- Full guard bezel option.
- Momentary or 2-level alternate action (push-on, push-off).
- UL recognized, CSA certified.
- Lamps can be furnished installed or ordered separately.
- Lamp circuit independent of switch circuit.

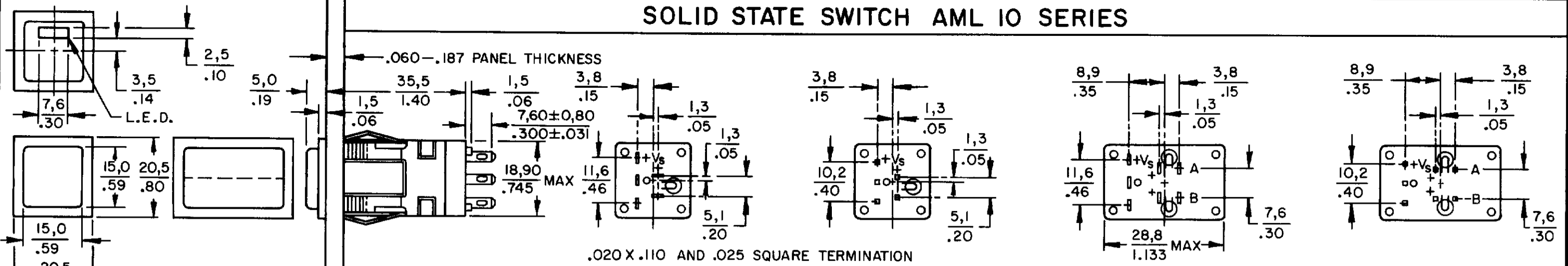
Notice

Button caps for MICRO SWITCH™ AML Pushbuttons are sold separately. Please see the links at the left for information on the buttons caps and other AML accessories.

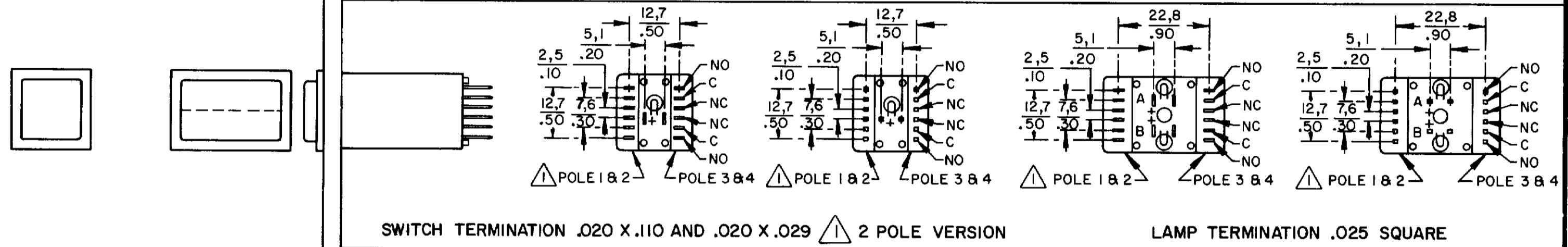
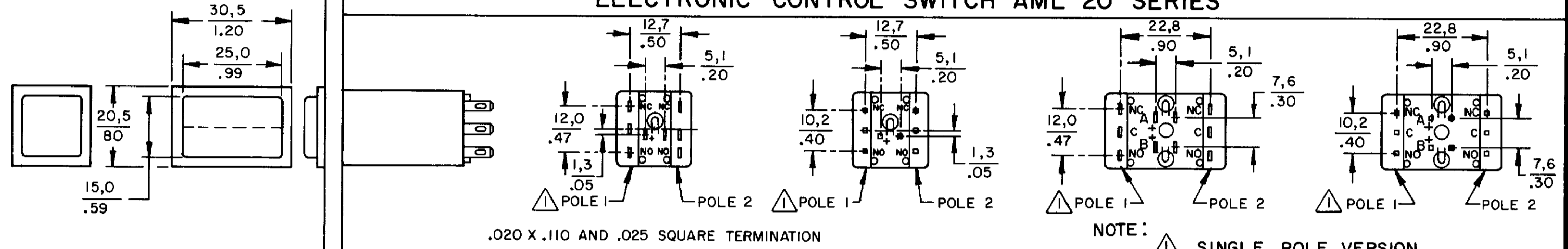
Product Specifications	
Product Type	MICRO SWITCH™ Pushbutton
Housing Type	Rectangular
Circuitry	DPDT
Action	Momentary Action
Mounting	Snap-in Panel
Lamp Type	Lighted, 2 Incandescent Lamp
Termination	.110 x .020 (Solder or Quick-Connect)
Ampere/Voltage Range (Resistive Load)	0.4-2 A @ 0.5 -250 Vac, 0.4-2 A @ 0.5-30 Vdc, 0.4-3 A @ 0.5-125 Vac
LED/Lamp/Neon Voltage	No Lamp Installed
Comment	use AML51 button
Availability	Global
UNSPSC Code	30211913
UNSPSC Commodity	30211913 Push button switches
Series Name	AML21

AML PUSHBUTTON AND INDICATOR SERIES

SOLID STATE SWITCH AML 10 SERIES

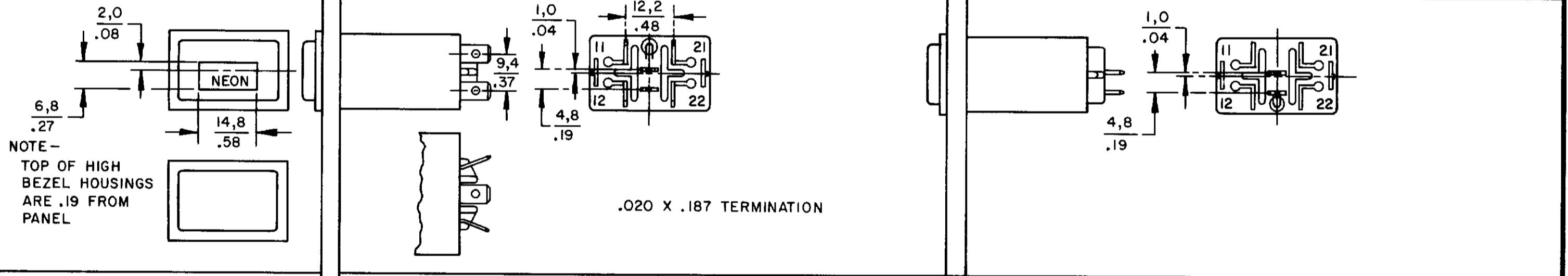


ELECTRONIC CONTROL SWITCH AML 20 SERIES

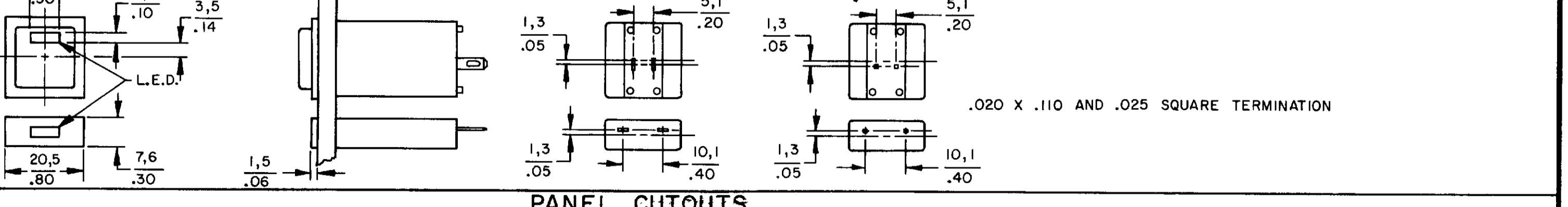
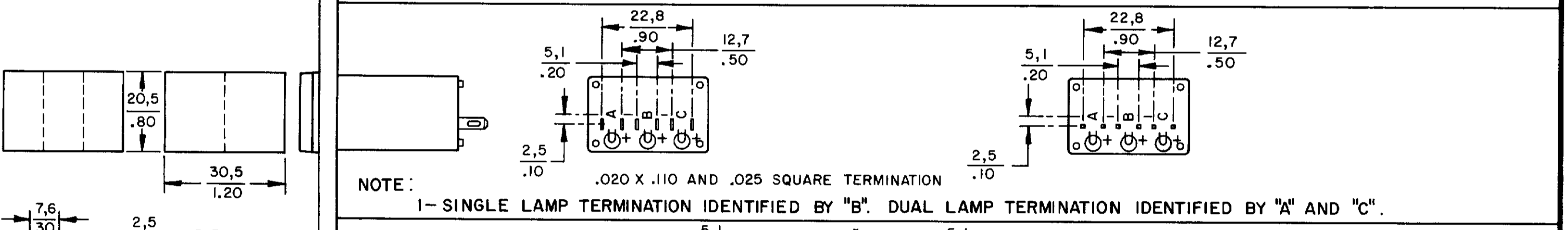
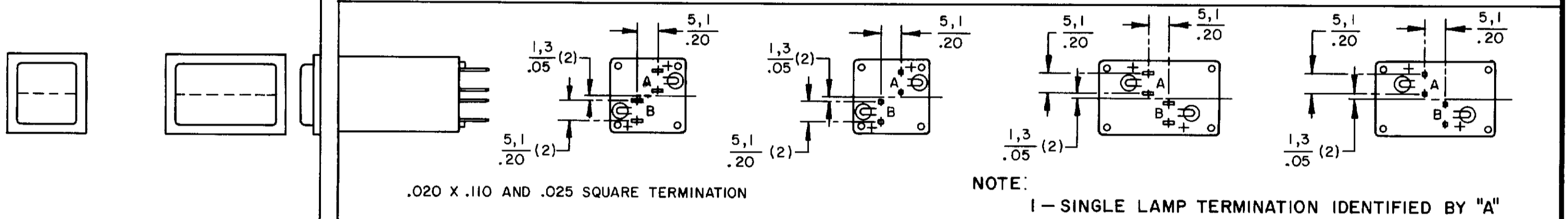


POWER SWITCH AML 30 SERIES

LINE POWER IND AML 43 SERIES



INDICATORS AML 40 SERIES

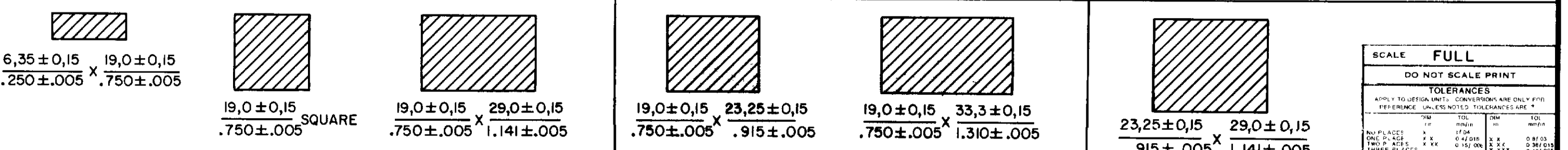


PANEL CUTOUTS

WITHOUT BARRIERS

SHORT BARRIER

LONG BARRIER



SCALE FULL	
DO NOT SCALE PRINT	
TOLERANCES	
APPLY TO DESIGN UNITS. CONVERSIONS ARE ONLY FOR REFERENCE. UNLESS NOTED, TOLERANCES ARE:	
INCHES	FRACTIONS
NO PLACES	± .005
ONE PLACE	± .001
TWO PLACES	± .0005
THREE PLACES	± .0002
ANGLES	± .001
DESIGN UNITS	DI METRIC <input type="checkbox"/> US CUSTOMARY <input type="checkbox"/>
THIRD ANGLE PROJECTION	
WEIGHT	

CATALOG LISTING
AML 10 20 30 40
 PAGE 1 OF 1 SERIES CHART 1
 RELEASE NO. CO-78498 REPLACES & 40 SERIES
 ISSUE 6
 REVISIONS:
 A 209297 6 J W 8 JUL 89
 B 201477 6 J W 9 OCT 00
 C 201566 C S L 20 OCT 00
 D 201696 D J V 00
 E 202971 C S L 30 APR 01
 DRAWN JAK 17 JUN 94 CHECK JAF 11 JUL 04